

Membership Application

Collecting Codes: Please circle the letter codes next to the features in which you have an interest.

- A** - Adding to collection **B** - Have surplus material to trade or sell
C - Collect mint stamps **D** - Collect used stamps
E - Collect covers, cancels, cachets, etc.
F - Inactive collection

Scenery	A	B	C	D	E	F
Waterfalls	A	B	C	D	E	F
Lakes and rivers	A	B	C	D	E	F
Volcanoes.	A	B	C	D	E	F
Earthquakes..	A	B	C	D	E	F
Caves	A	B	C	D	E	F
Mountains	A	B	C	D	E	F
Rock formations.	A	B	C	D	E	F
Mining..	A	B	C	D	E	F
Glaciers	A	B	C	D	E	F
Polar	A	B	C	D	E	F
Geologists, people	A	B	C	D	E	F
Geology	A	B	C	D	E	F
Rocks and minerals	A	B	C	D	E	F
Fossils	A	B	C	D	E	F
Meteorology	A	B	C	D	E	F
Other _____	A	B	C	D	E	F
Other _____	A	B	C	D	E	F

Name _____

Address _____

Email _____

Phone _____

ATA # _____ APS # _____

Earth's Physical Features Study Unit

Earth's Physical Features Study Unit
 Fred Klein - Secretary/Treasurer
 515 Magdalena Avenue
 Los Altos, CA 94024 USA

<http://epfsu.jeffhayward.com>
epfsu@jeffhayward.com

Our study unit specializes in the collecting of stamps and other philatelic material related to Earth's physical features.



Earth's Physical Features Study Unit
 Fred Klein - Secretary/Treasurer
 515 Magdalena Avenue
 Los Altos, CA 94024 USA

<http://epfsu.jeffhayward.com>
epfsu@jeffhayward.com

Earth's Physical Features Study Unit



Earth's Physical Features Study Unit of the American Topical Association.



What is the Earth's Physical Features Study Unit?

The EPFSU was organized in 1977 to promote collecting philatelic items such as stamps, covers, cancellations, meters, postal history, and postal stationary related to Earth's many physical features.



Thank you for your interest
in the EPFSU.

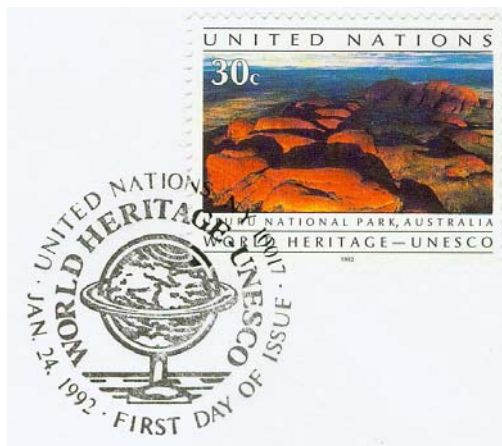
Visit our website.

We hope you will join us!



Our newsletter, *Nature's Wonders*, is the quarterly publication of the EPFSU which contains informative articles about philatelic material from around the world.

Members are encouraged to contribute articles and share information via the newsletter about our topic.



Dues Structure

Dues are for one or two calendar years. New member dues paid mid-year include the previous newsletter issues for that calendar year.

North America

\$18 for one year \$34 for two years

Outside North America

\$30 for one year \$56 for two years

